

## ADD-4 Product Specifications



### System Features

- > Full-travel alphanumeric keyboard with audio feedback.
- > Configurable as a stand-alone unit or hard-wired to a P.C. using standard 6-conductor telephone cabling.
- > Portable, 128K dual battery-backed RAM memory, ensures data integrity
- > Special function keys for logging fax pages, postage charges, etc.
- > Dimensions: 6" X 8" X 4"  
Weight: 1.75 lbs.  
Power Requirements: 110 Volt AC outlet.

### Key Operator Features include:

- > Instant "Look-up" feature lists total copies, postage and fax charges on the ADD-4 display for on-the-spot billing information.
- > "Clear last transaction" feature deletes poor quality copy runs.
- > Add/Change/Delete Client and User Codes via optional validation features.

### Software Features

The ADD4PC Data Collection Program for Windows is a P.C. Based application for collecting ADD-4 data, maintaining optional Client/User validation tables, generating reports and formatting data for interfacing with various Time & Billing programs.

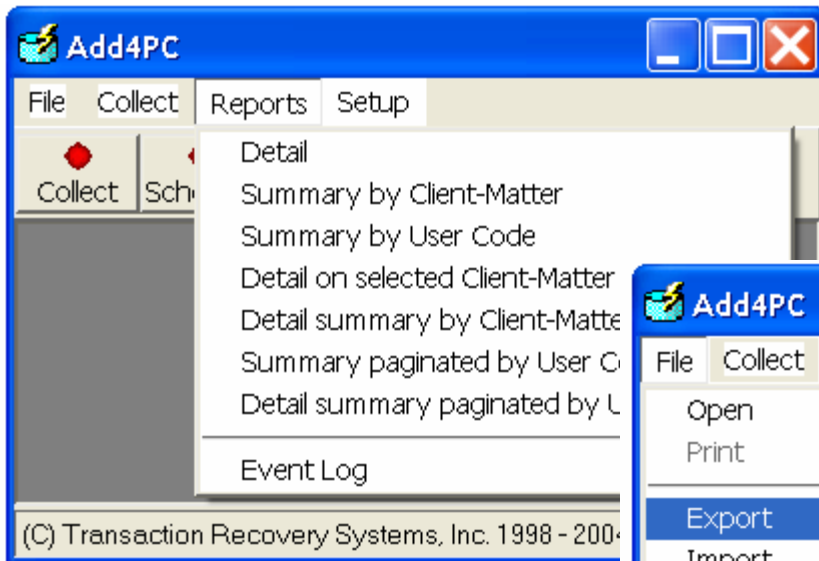
### Key Software features include:

- > Time & Billing interface modules are available for TABS, Timeslips, JURIS, PCLAW and many others.
- > Variable pricing option for charging different clients different rates for copies and fax pages.
- > Hard- copy billing reports and management reports are also available

# ADD4PC Data Collection Program

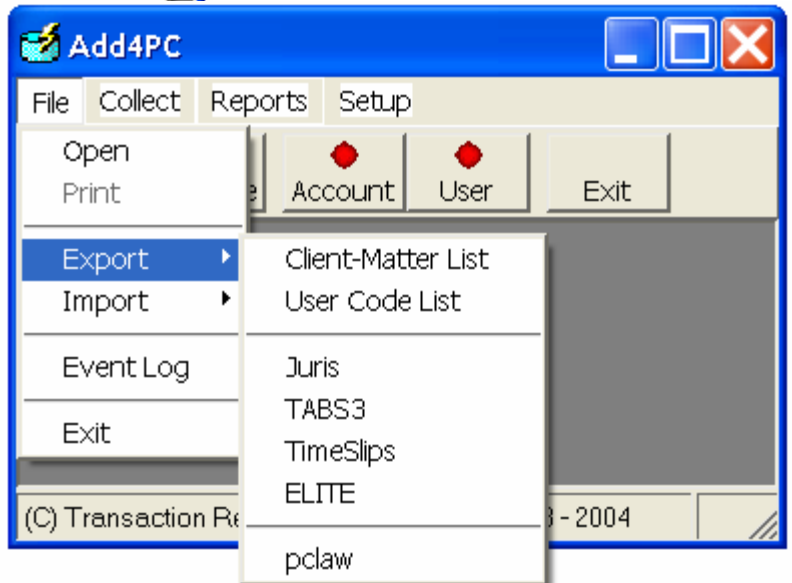
The ADD4PC Data Collection Program for Windows is used to:

- Collect data from the ADD-4 Copier Expense Recovery unit(s)
- Maintain Client and/or User validation and variable pricing tables (optional)
- Generate hard copy billing reports as needed
- Format data for interfacing with various Time and Billing programs including **TABS3**, **Timeslips**, **JURIS PCLaw** and many others.



<<< Numerous hard copy billing reports provide detail and summary data on all transactions

Export data to your Time and Billing programs >>>



A screenshot of the Add4PC - [Client-Matter] window. The window title is "Add4PC - [Client-Matter]". The menu bar includes File, Collect, Reports, and Setup. The toolbar has buttons for Collect, Schedule, Account, User, and Exit. Below the toolbar is a table with columns for Account, Description, UnitCost, First, Then, Limit, and Facsimile. The table contains five rows of data. The status bar at the bottom reads "(C) Transaction Recovery Systems, Inc. 1998 - 2004", "0.1.96", and "Sep 07, 2005 12:10 pm".

Account	Description	Copies			Facsimile				
		UnitCost	First	Then	Limit	UnitCost	First	Then	Limit
20001	Frank N. Stein	0.25	0.00	0.00	0.00	1.00	0.00	0.00	0.00
20002	Nron vs. Everyone	0.10	0.00	0.00	0.00	1.00	0.00	0.00	0.00
20003	Wee Cheatum and Howe	0.05	0.00	0.00	0.00	0.50	0.00	0.00	0.00
20004	Husband vs Wife	0.10	0.00	0.00	0.00	0.00	0.00	0.00	0.00
20005	Administrative copies	0.20	0.00	0.00	0.00	0.33	0.00	0.00	0.00